

Amon G. Carter Jr. Exhibits Hall

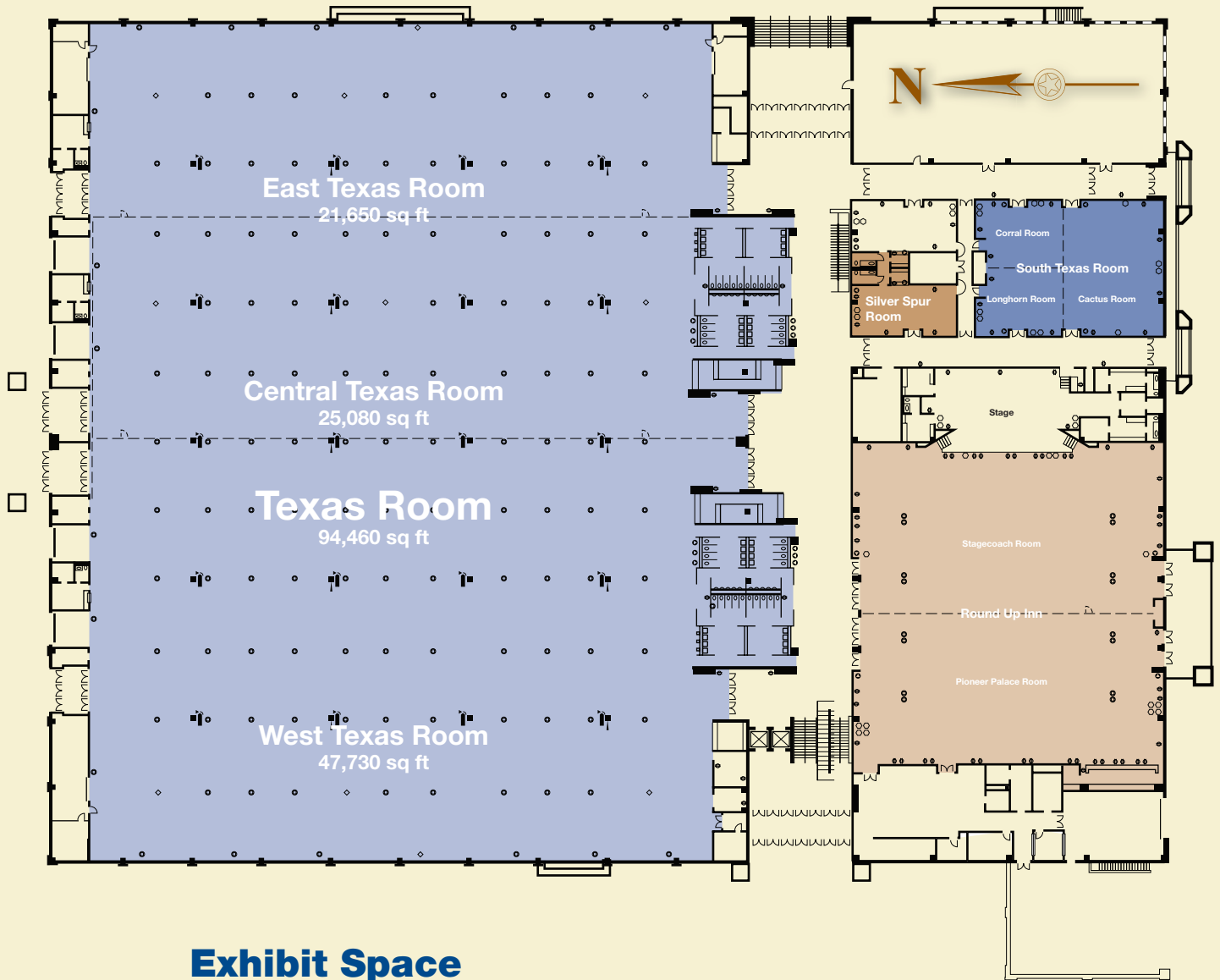


Exhibit Space

Maximum 94,460 sq. ft.
 Minimum 21,650 sq. ft.

Features

- Lighting—Footcandles providing fluorescent-type illumination at table or desk height
- Climate control—Full central heating and air conditioning
- Restrooms—Eight
- Concession Area—Six permanent

Utilities

- Electric—Utility boxes located every 30 ft. with four phone jacks in each box. Three-phase power available upon request.
- Water—Outlets spaced conveniently throughout exhibits area, along with numerous floor drains.

Key

- Floor Box Containing:
4 110V Outlets
1 220V Outlet
4 Telephone Jacks
- ◇ Floor Box Containing:
4 110V Outlets
1 220V Outlet
4 Telephone Jacks
2 Microphone Jacks
- 110V Duplex Outlets
- Telephone Jack
- Microphone Jack
- ⊥ Water Hydrant
- Column
- ⊥ Fire Extinguisher